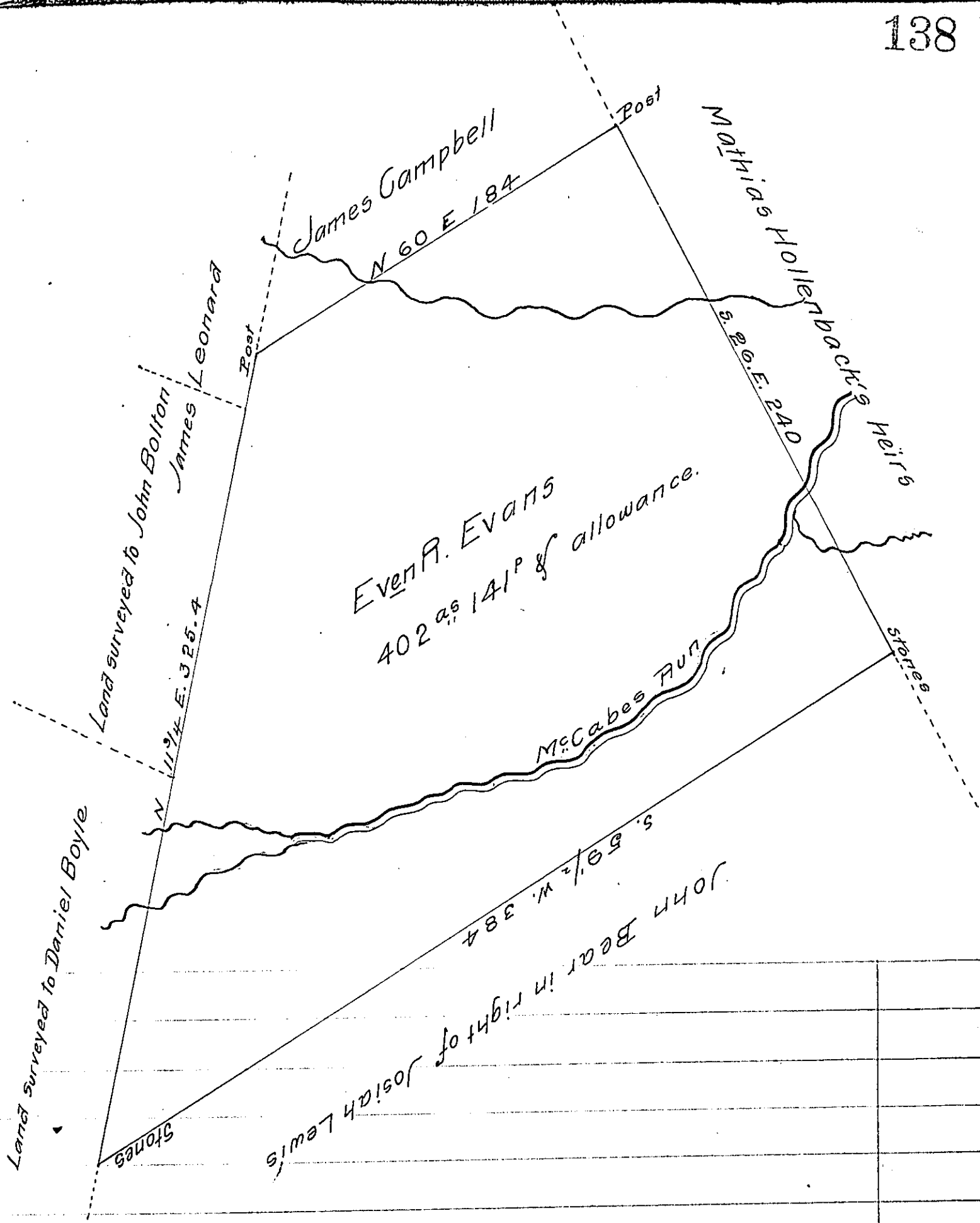


FORM NO 1.



Draft of a tract of land situate in Tyrone Township Perry County (formerly Cumberland County) containing Four hundred and two acres One hundred and forty one perches & allowance of six per cent for roads &c. Surveyed October 26th 1848 in pursuance of a warrant granted to Evan R. Evans dated 24th of February 1794

p^r W^m Wilson D.S.

John Laporte Esq
Surveyor General of Pa.

IN TESTIMONY that the above is a copy of the original remaining on file in the Department of Internal Affairs of Pennsylvania, made conformably to an Act of Assembly approved the 16th day of February, 1833, I have hereunto set my Hand and caused the Seal of said Department to be affixed at Harrisburg, this thirteenth day of October 1907

Henry Board
Secretary of Internal Affairs.